

Catalogue

1. User Notice	2
2. Equipment List	4
3. Installation tools	5
4. Installation drawings.....	6
5. Installation steps	7
6. Software debugging	8
7. Instructions for use.....	14
8. After sales instructions.....	15

1.User Notice

Please read this manual carefully before using the product, keep the safety precautions in mind and keep this manual well.

- The installation, commissioning and maintenance of the equipment must be carried out by authorized personnel of the manufacturer to ensure that the equipment will be under normal working condition. If the equipment is not installed, commissioned or maintained by authorized personnel by the manufacturer, and caused the equipment not reaching the normal working state or performance, or even damaged and cannot be used, the manufacturer will not be responsible for the matter.
 - If the power supply components are damaged, in order to avoid danger, please cut off the power supply and contact the manufacturer. To avoid injury or financial loss to you or others, please read the following safety precautions carefully.
 - Do not disassemble or modify this equipment. Unauthorized disassembly or modification of this equipment may result in malfunction or even electrical leakage. If you need to disassemble or modify the equipment, please contact our technician to arrange remote guidance. All equipment that is modified without the supervision of the company's technical personnel will not be guaranteed.
 - Keep all accessories in the equipment away from direct sunlight and any other heat sources.
-

- Remove any items that may fall into the vents. Do not block or cover the vents on the device. Do not cover any objects while the machine is running, and any items that may prevent the device from dissipating heat during operation. There will be damage to the machine or may even set fire if the heat can't be dissipated.
 - Make sure each power switch is convenient for user to control when installing the equipment. The equipment must be connected to earth wire reliably to prevent leakage or static electricity from damaging the internal electronic components of the machine. Do not use the device under unstable voltage conditions. A voltage that is too high or too low can cause damage to the device electronics or the device cannot be started. In the thunderstorm, please turn off the equipment and unplug the power in time to avoid unnecessary losses.
 - Keep the device away from severe vibration or collision during installation and use. Ensure the stability of the equipment after the installation. Never place heavy objects on the device. Placing heavy objects on the equipment may cause the equipment to fall or be damaged, or even cause serious property losses.
 - Please do not tamper with the system and software configuration. Do not install anti-virus software, otherwise it may affect the game experience.
-

2. Equipment List

Magic Ball Machine



Projection bracket



Wireless keyboard and mouse



PC remote control



Projector remote control



3. Installation tools

Impact drill



Cross screwdriver



spanner



Hammer



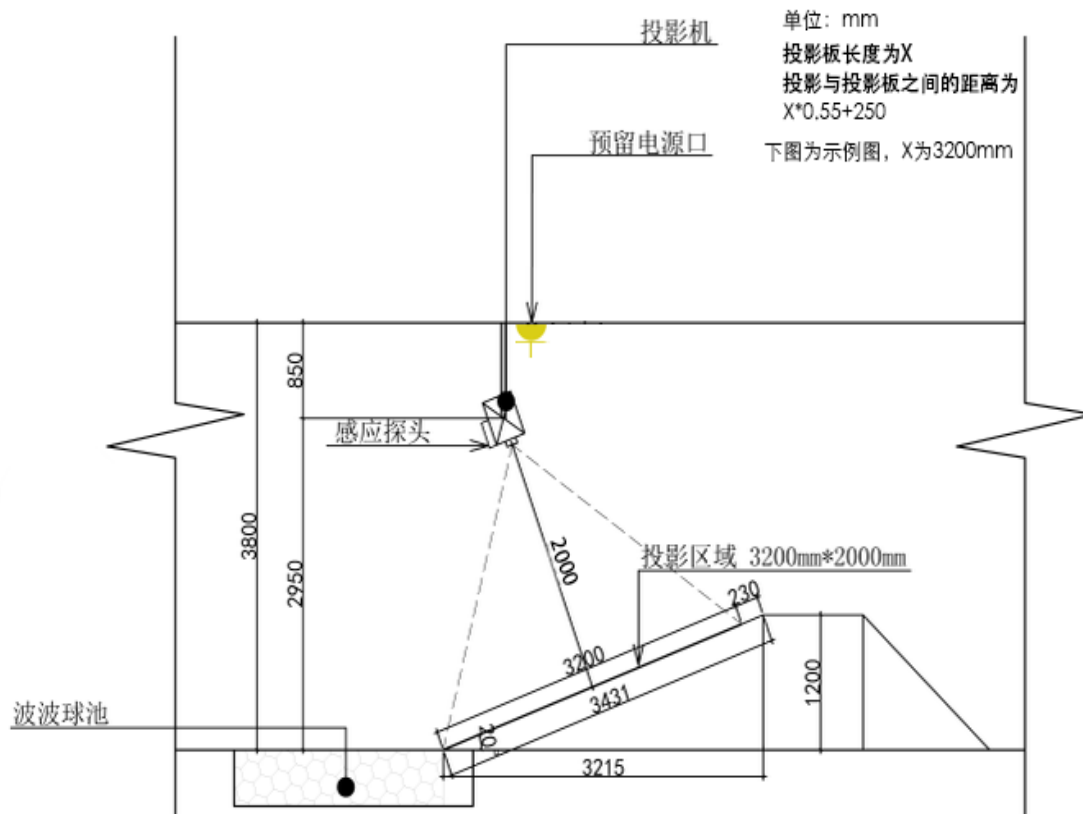
Tape measure



Pliers



4. Installation drawings



Note: The figure is calculated according to the standard of 3.2 meters in length and 2.0 meters in height of the slide projection screen, and the installation position is as shown in the figure above.

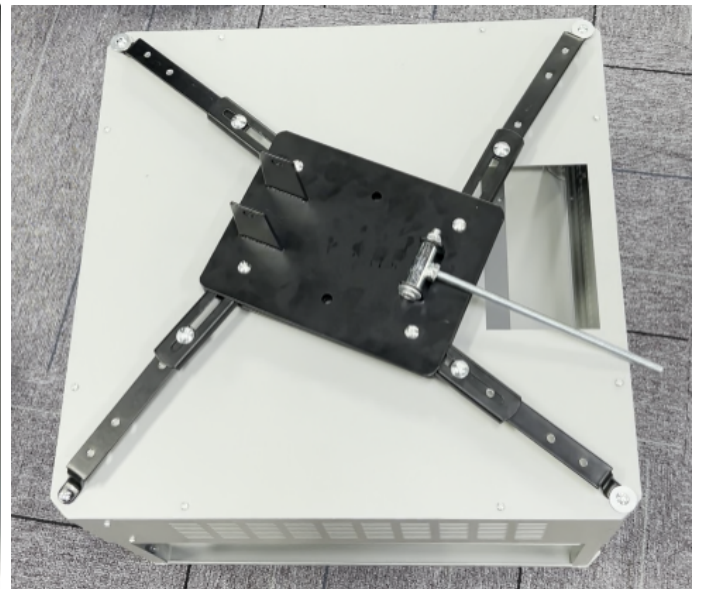
If the size of the slide projection surface changes, the projector position shall be positioned according to the following calculation method, and the length of the projection board X, the width Y, and the unit mm shall be located

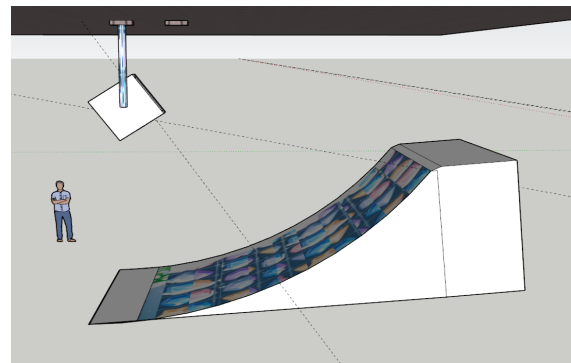
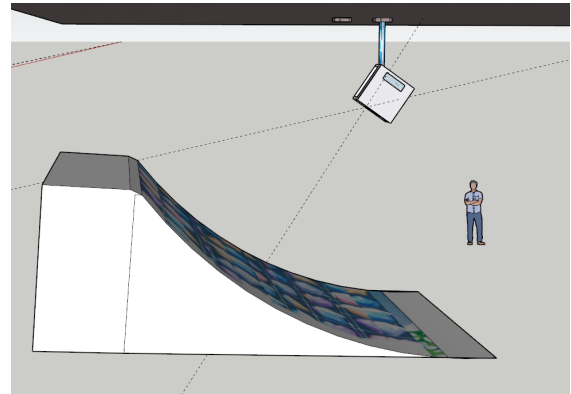
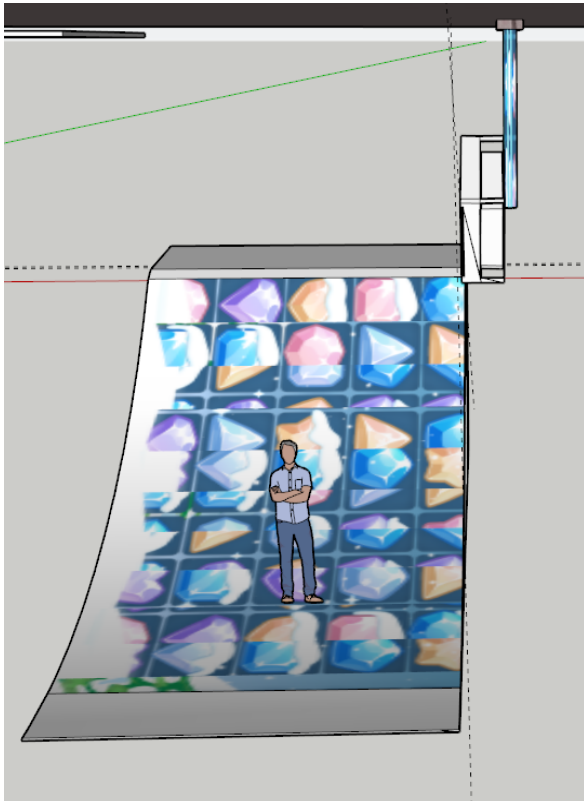
The distance between the projection bracket and the slide: $X \times 0.55 + 250$

Projector height: The bottom of the projector and the top of the projection panel are basically at the same height.

5. Installation steps

1. According to the blueprint tutorial, after determining the installation position, fix the upper half of the projection bracket on the top of the ceiling. The claw part of the bracket used for the projection all-in-one machine is used to fix the four corners of the frame.
2. Assemble the upper and lower structures together and connect the power supply。
3. After turning on, use the four corner correction function of the projector to adjust the projection screen and projection board to the same size (if unsure how to operate, please contact after-sales staff).





6. Software debugging

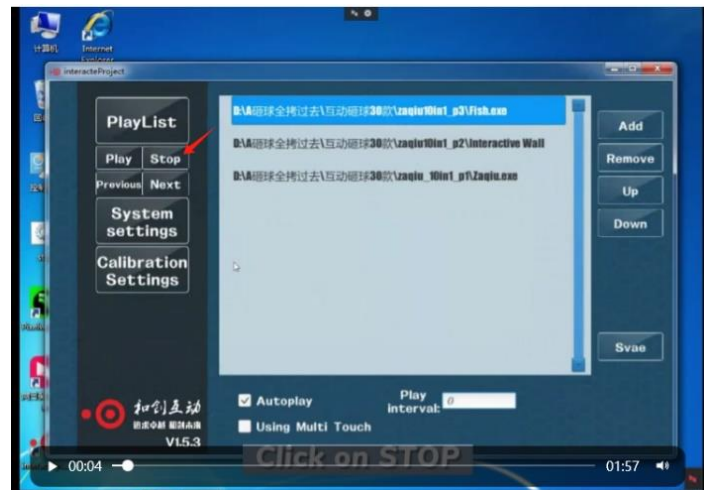
0. Rotating
projection focus,
Adjusting the clarity
of the image.



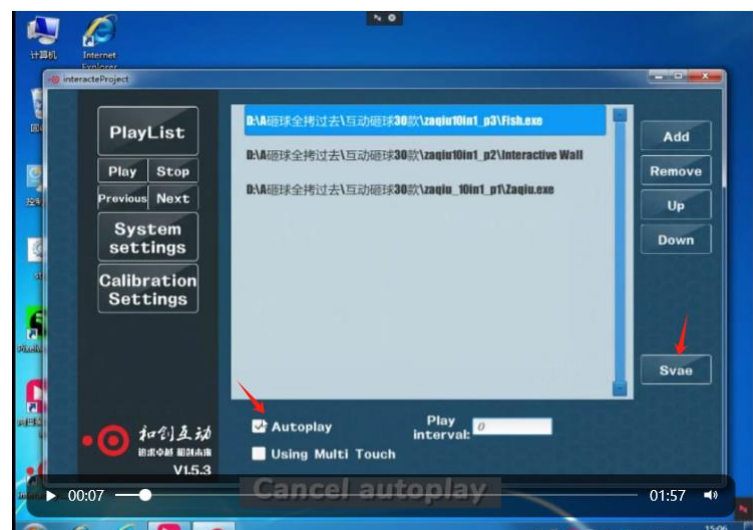
1. First use the Esc key in the upper left corner of the keyboard to exit the game and return to the computer desktop



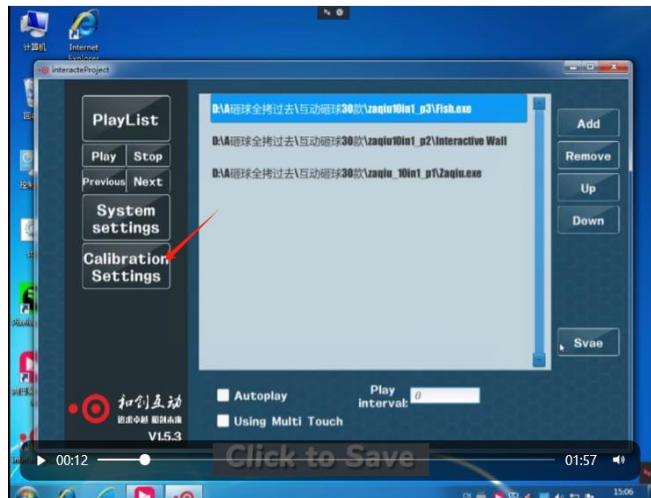
2. Click on the interactive system, enter the system, click on stop



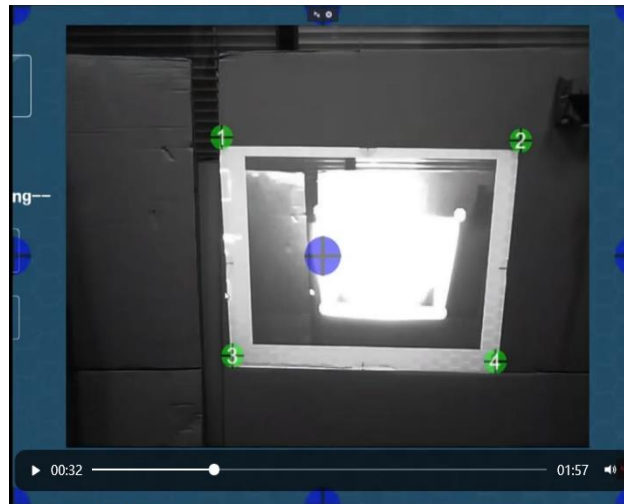
3. Auto play ✓
Remove, click save



4. Click on proofreading settings



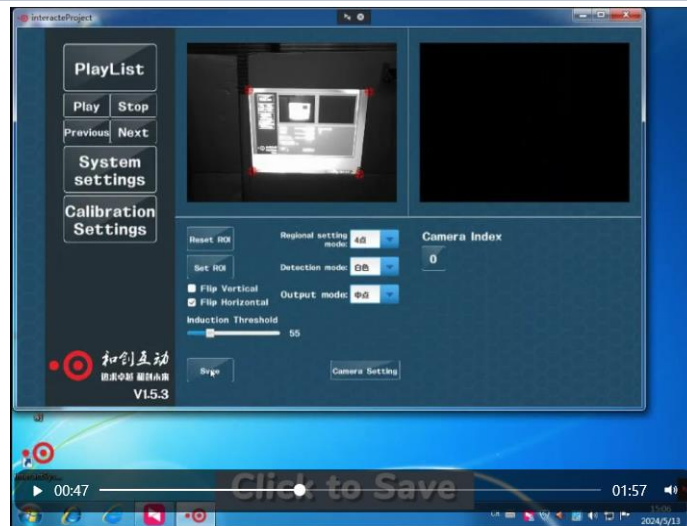
5. First, adjust the camera so that it can cover the entire painting surface



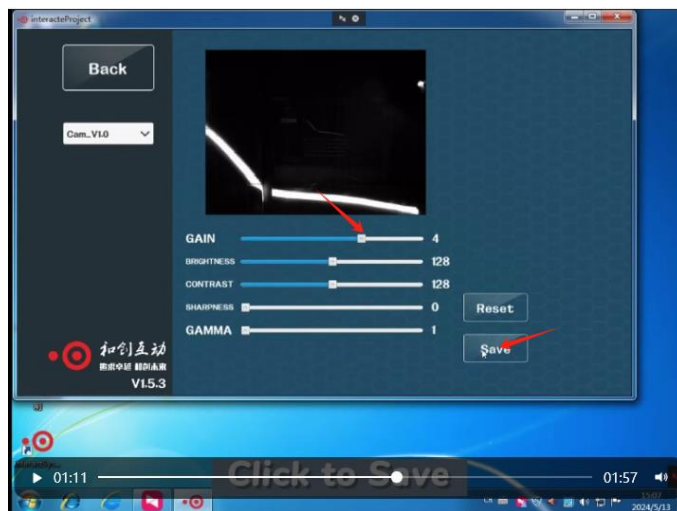
6. If there is no coverage, you need to use your hands to move the camera on the device and aim it at the picture



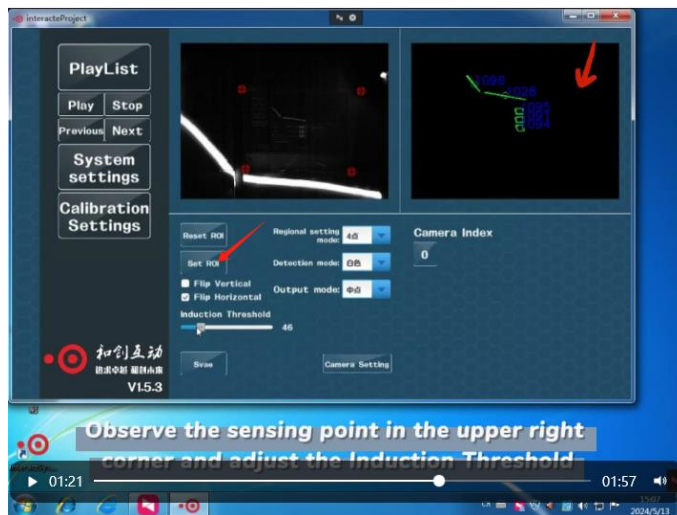
7. Click on camera settings



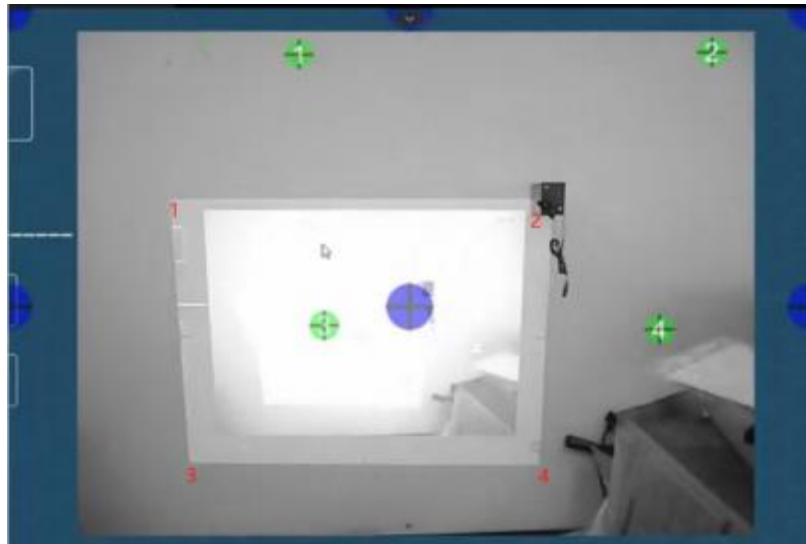
8. Click to adjust the gain to 6. If you still cannot see the outline of the screen clearly, click on Gamma to adjust it to 6. Click save again to return.



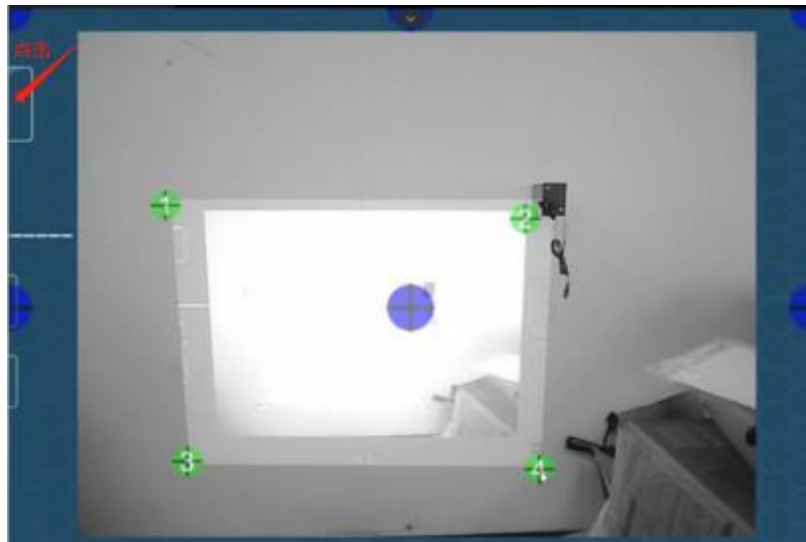
9. Click to set the sensing area



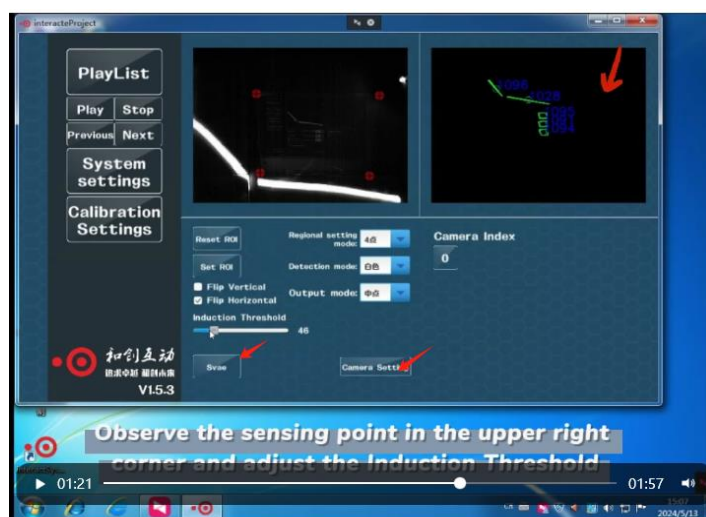
10. Move the mouse to 4 small circles, left-click and drag to the 4 corners of the projection screen



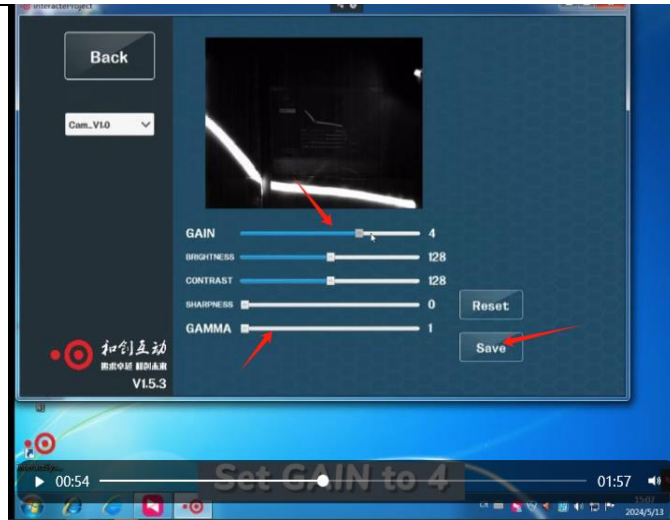
11. Adjust the four corners as shown in the following figure



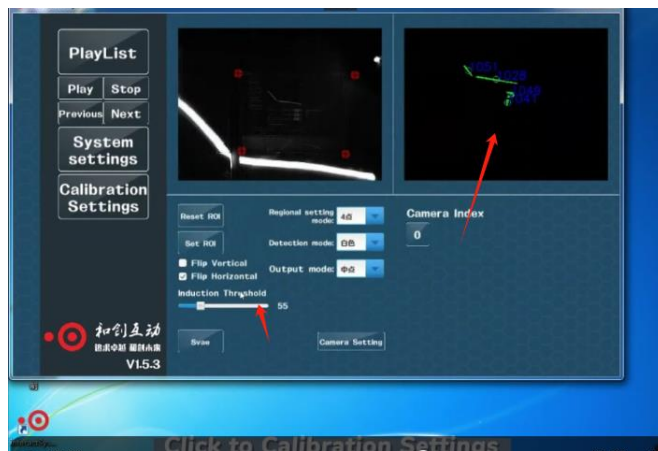
12. Click save and then click camera settings



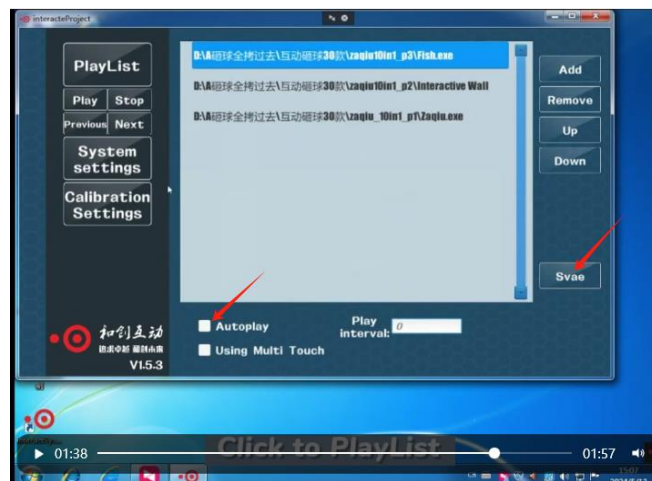
13. Adjust the gain that was just adjusted back to 4 or 5 according to the on-site lighting. Adjust the gamma to 0, click save, and then click return



14. After returning, click on proofreading settings and adjust the sensing threshold with the mouse. When adjusting, check for sensor interference in the upper right corner. If there is no interference, touch the screen to see white light dots. After adjusting, click save



15. Click on the play column Table, auto play, check ☒ to save, click play to start the game

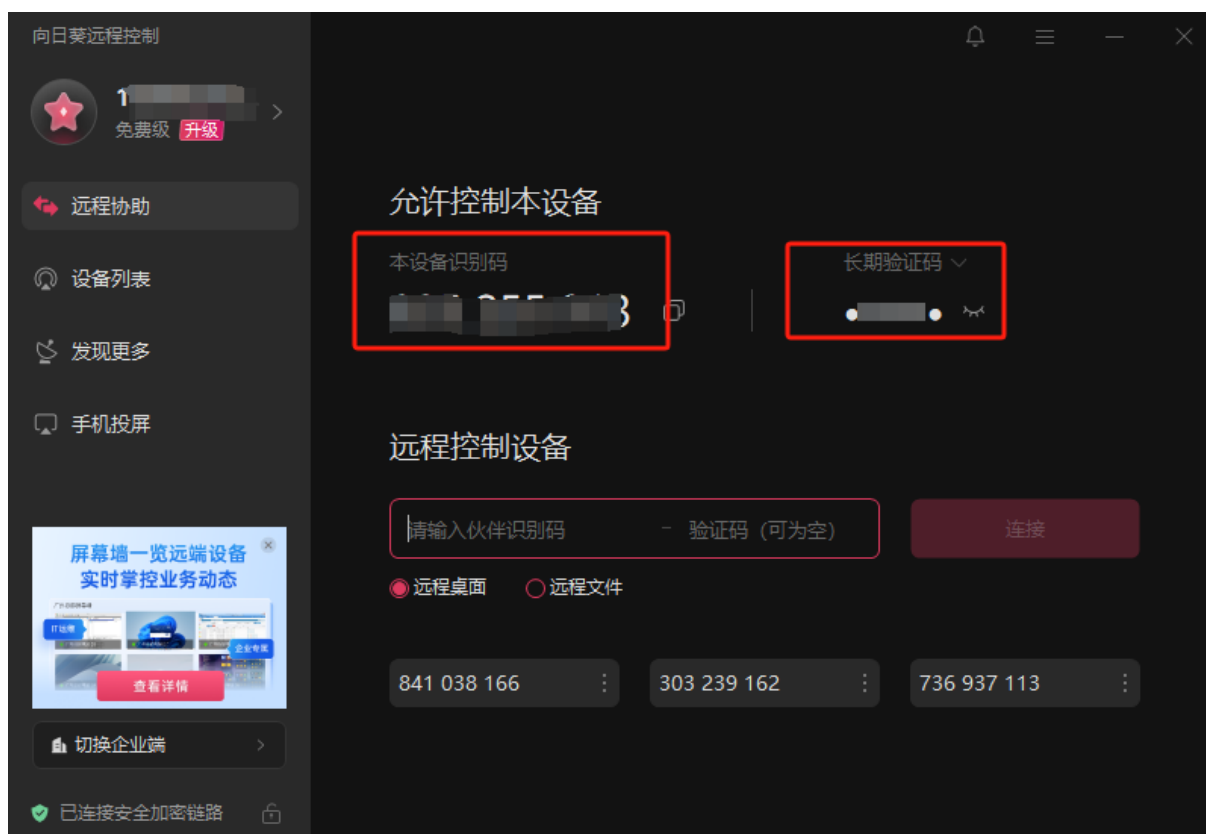


7. After sales instructions

Interactive slide manual

When encountering problems during installation and debugging, you can contact after-sales staff.

When remote assistance is needed, it is necessary to first connect to the network, then open the Sunflower remote software on the computer desktop, and send the remote code to the after-sales staff.



8. Instructions for use

1. Power on: 1. First, use the projector remote control to turn on the projector。



2. Use the console remote control to start the game console again



3. The interactive system and game content will automatically activate

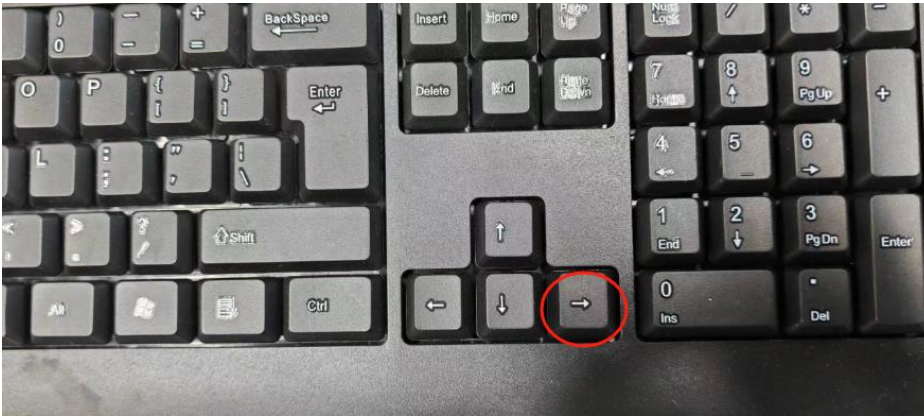
2. Shutdown: 1. First, use the console remote control to turn off the game console until the computer system shuts down.



2. Use the projector remote control to turn off the projector.



3. Switch games: The game automatically switches every few minutes. Press the right arrow key on the keyboard, or manually switch games



After-sales technical support contact information

Telephone (same number on WeChat) : 13691862701

Telephone (same number on WeChat) : 18127046051

Gmail mailbox : zhuzehua7@gmail.com

163 mailbox : 17683853087@163.com
